



EZ STIK™ Clear Multi-Surface is a custom printed adhesive backed clear vinyl graphic for retail windows, glass doors, mirrors, and other smooth surfaces like walls, laptops, and vehicles.

- Easy to apply, medium-tack adhesive, clean removal
- Digital direct full color print with white ink underbase and white ink spot color available
- Laminated for scratch and UV protection, vehicle safe
- Back adhesive standard / Face adhesive available
- Choice of square cut or shape cut

EZ STIK™ Clear Multi-Surface is printed digital direct in full color and enhanced with white ink providing captivating images making your messages visually engaging. From small personal decals, to poster-sized marketing messages, graphics can be square cut or die cut into almost any shape adding character and flair. Great for all varieties of marketing messaging.

- School Spirit Graphics
- Fleet Graphics
- Point of Purchase
- Special Event Marketing

The graphics are laminated for scratch and UV protection adding durability and longevity to it's clean appearance. With it's unique medium-tack adhesive, these graphics are easy-to-apply. And when it's time to change the message, because of the special adhesive, the graphics are easily removed without leaving any sticky residue.



Vehicle Safe.
Great for
Team Spirit
Graphics!

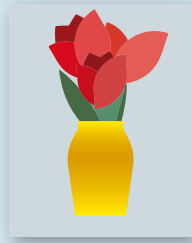
EZ STIK™ Clear Multi-Surface / Item: EZCM

Use: Indoor/outdoor. Apply to glass or any smooth surface. When applied to surfaces like walls, media performs best on gloss or semi-gloss paint finishes. Life expectancy 2-3 years.

Media: 6mil vinyl including protective laminate

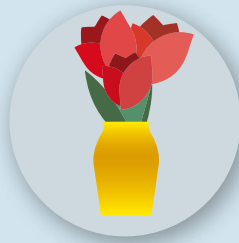
Adhesive: acrylic, medium-tack, removable, clean removal

Finishing Cut Options – While all EZ STIK™ graphics come standard with a square cut trim, many of the products can be finished with custom cutting, providing an enhanced visual appearance. Below are the cut options available on EZ STIK™ Clear Multi-Surface.



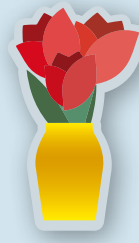
Standard Square Cut

Rectangle or square shape with straight sides and square corners.



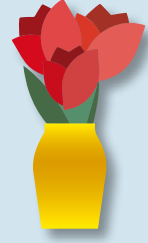
Simple Shape Cut

Circle, diamond, triangle, rounded corners, etc. Additional charges may apply.



Cloud Cut

A single-piece graphic that is cut to shape with a "cloud" margin (white or colored) around the design. Additional charges may apply.



Contour Cut

A single-piece graphic that is cut to shape with no margin around the design (cut to color). Some limitations may apply. Additional charges may apply.

General Application Instructions

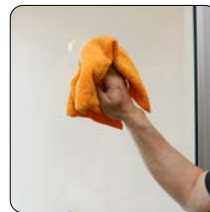
For specialty graphics to properly adhere, the application surface must be clean: free of oils, grease, dust, and debris. If the surface has been painted recently, the surface must be allowed to cure for at least 45 days prior to graphic application.

Apply all specialty graphics in temperatures that are neither too hot nor too cold. The optimum temperature for installing is between 65° and 72°F. Graphics can be installed as low as 50° and up to 90°F. Larger outdoor graphics are easier to apply in the protection of shade.

Windows/Glass: Install on a clean and dry surface. Clean glass surface with water or a common glass cleaner. Best practices: A razor-blade scraper with glass cleaner (or water) can be used to remove little bits of crud. Using a paper towel or lint-free rag, wipe glass surface with isopropyl alcohol or denatured alcohol.

Walls: Install on a clean and dry surface. Best practices: wipe dust from wall surface with a clean (slightly damp) cloth and allow to dry. Wall graphics adhere best to walls with gloss paint.

Other Surfaces: For all other applications, make sure surface is clean and dry. Choose a location to test graphic adhesion. Because surface conditions and properties can vary widely, it is ultimately the responsibility of the end user to test the bond and effective removal of the adhesive graphic from the chosen surface.



1) Surface Prep.
Wipe glass clean.



2) Peel.
Begin to remove backing.



3) Stick.
Use overlapping strokes to apply the graphic.



4) Apply Pressure.
With a wiping motion, firmly press entire surface to activate adhesive.

Method: Use overlapping strokes as you apply the graphic to the surface. If you don't have an installation squeegee, a stiff plastic (like a credit card) can be helpful to smooth the graphic out during application.

For video demonstrations of specialty graphics applications, including tips and techniques, visit: amatterofgraphics.com