



EZ STIK™ Clear Smooth is a custom printed, adhesive backed clear vinyl graphic that adds a touch of class with its unique white ink enhanced look. Designed to be applied to polished smooth surfaces like windows, doors, tech gear, and MORE!!

- Medium-tack adhesive, clean removal
- Digital direct full color print with white ink underbase and white ink spot color available
- Choice of square cut or shape cut
- Back adhesive standard / Face adhesive by request
- Indoor/outdoor use for retail glass surfaces, walls, doors and more. (not intended for use on vehicles)

EZ STIK™ Clear Smooth is printed digital direct in full color enhanced with white ink providing a striking appearance that makes your messages visually “pop”. Great for point-of-purchase messaging and other marketing-oriented messages (short-term, from one day to one year). Graphics can be square cut or die cut into almost any shape adding character to your unique presentation.

With its unique medium-tack adhesive, these graphics are easy-to-apply. And when it’s time to change the message, because of the special adhesive, the graphics are easily removed without leaving any sticky residue. It’s a graphic with stylish elegance that doesn’t break the bank.

Why EZ STIK™ Graphics? Windows, walls, floors and doors represent valuable advertising space for dynamic messages and yet most people don’t think about these alternative locations. Stand out in the crowd and let us help you put your next message where it will be noticed.



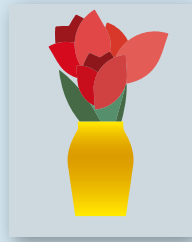
EZ STIK™ Clear Smooth / Item: EZCS

Use: Indoor/outdoor. Apply to glass or any smooth “glossy” type surface. Not intended for use on vehicles.

Media: 4mil vinyl

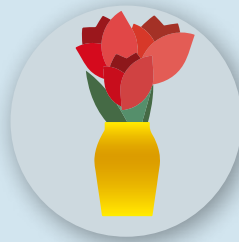
Adhesive: acrylic, medium-tack, removable

Finishing Cut Options – While all EZ STIK™ graphics come standard with a square cut trim, many of the products can be finished with custom cutting, providing an enhanced visual appearance. Below are the cut options available on EZ STIK™ Clear Smooth.



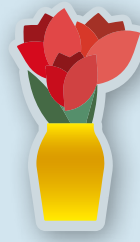
Standard Square Cut

Rectangle or square shape with straight sides and square corners.



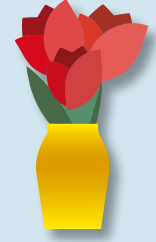
Simple Shape Cut

Circle, diamond, triangle, rounded corners, etc. Additional charges may apply.



Cloud Cut

A single-piece graphic that is cut to shape with a "cloud" margin (white or colored) around the design. Additional charges may apply.



Contour Cut

A single-piece graphic that is cut to shape with no margin around the design (cut to color). Some limitations may apply. Additional charges may apply.

General Application Instructions

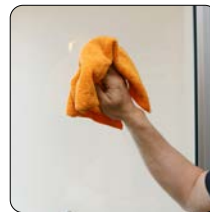
For specialty graphics to properly adhere, the application surface must be clean: free of oils, grease, dust, and debris.

Apply all specialty graphics in temperatures that are neither too hot nor too cold. The optimum temperature for installing is between 65° and 72°F. Graphics can be installed as low as 50° and up to 90°F. Larger outdoor graphics are easier to apply in the protection of shade.

Windows/Glass: Install on a clean and dry surface. Clean glass surface with water or a common glass cleaner. Best practices: A razor-blade scraper with glass cleaner (or water) can be used to remove little bits of crud. Using a paper towel or lint-free rag, wipe glass surface with isopropyl alcohol or denatured alcohol.

Other Surfaces: For all other applications, make sure surface is clean and dry. Choose a location to test graphic adhesion. Because surface conditions and properties can vary widely, it is ultimately the responsibility of the end user to test the bond and effective removal of the adhesive graphic from the chosen surface.

Method: Use overlapping strokes as you apply the graphic to the surface. If you don't have an installation squeegee, a stiff plastic (like a credit card) can be helpful to smooth the graphic out during application.



1) Surface Prep.
Wipe glass clean.



2) Peel.
Begin to remove backing.



3) Stick.
Use overlapping strokes to apply the graphic.



4) Apply Pressure.
With a wiping motion, firmly press entire surface to activate adhesive.

For video demonstrations of specialty graphics applications, including tips and techniques, visit: amatterofgraphics.com