



**EZ STIK™ Clear View is a custom printed, "cling-type" graphic used especially on retail glass windows and mirrors (high-polished surfaces).**

- Easy to apply, clean, residue free removal
- Square cut or shape cut available
- Digital direct full color print with white ink underbase and white ink spot color available
- Optically clear media (the clearest media avail)
- Back adhesive standard / Face adhesive available
- Indoor/outdoor use for retail glass windows and mirrors (expect a shorter life when used outdoors). Not intended for use on vehicles. Will not work on etched or "sandblasted" glass. Not intended for cold environments.

EZ STIK™ Clear View is an optically clear, non-adhesive material that is an excellent alternative to "old-school" static cling products. With its micro suction technology, it can be applied to glass providing a smooth, bubble-free image.

- Retail Windows
- Display Cases
- Glass Doors
- Bathroom Mirrors

EZ STIK™ Clear View is printed digital direct in full color providing a translucent appearance that makes your messages subtle and blend in with the visual surroundings. Often seen on entrance-way doors and professional offices. Unlike many other graphic printing substrates, EZ STIK™ Clear View is a polypropylene film, that is phthalates and formaldehyde free making it a go to "green solution" for environmentally friendly window graphics.



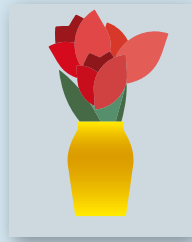
**EZ STIK™ Clear View / Item: EZGC**

**Use:** Indoor/outdoor retail or residential window glass or in-store cooler doors. Not intended for use on vehicles.

**Media:** 6mil polypropylene film

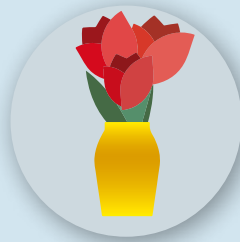
**Adhesive:** non-adhesive (micro suction technology)

**Finishing Cut Options** – While all EZ STIK™ graphics come standard with a square cut trim, many of the products can be finished with custom cutting, providing an enhanced visual appearance. Below are the cut options available on EZ STIK™ Clear View.



**Standard Square Cut**

Rectangle or square shape with straight sides and square corners.



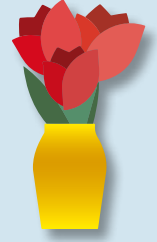
**Simple Shape Cut**

Circle, diamond, triangle, rounded corners, etc. Additional charges may apply.



**Cloud Cut**

A single-piece graphic that is cut to shape with a "cloud" margin (white or colored) around the design. Additional charges may apply.



**Contour Cut**

A single-piece graphic that is cut to shape with no margin around the design (cut to color). Some limitations may apply. Additional charges may apply.

**General Application Instructions**

For specialty graphics to properly adhere, the application surface must be clean: free of oils, grease, dust, and debris.

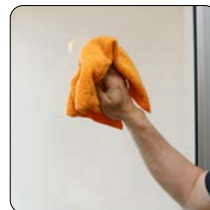
Apply all specialty graphics in temperatures that are neither too hot nor too cold. The optimum temperature for installing is between 65° and 72°F. Graphics can be installed as low as 50° and up to 90°F. Larger outdoor graphics are easier to apply in the protection of shade.

Windows/Glass: Install on a clean and dry surface. Clean glass surface with water or a common glass cleaner. Best practices: A razor-blade scraper with glass cleaner (or water) can be used to remove little bits of crud. Using a paper towel or lint-free rag, wipe glass surface with isopropyl alcohol or denatured alcohol.

Other Surfaces: For all other applications, make sure surface is clean and dry. Choose a location to test graphic adhesion.

Method: Use overlapping strokes as you apply the graphic to the surface. If you don't have an installation squeegee, a stiff plastic (like a credit card) can be helpful to smooth the graphic out during application.

For video demonstrations of specialty graphics applications, including tips and techniques, visit: [amatterofgraphics.com](http://amatterofgraphics.com)



**1) Surface Prep.**  
Wipe glass clean.



**2) Peel.**  
Begin to remove backing.



**3) Stick.**  
Use overlapping strokes to apply the graphic.



**4) Apply Pressure.**  
With a wiping motion, firmly press entire surface to activate adhesive.