



EZ STIK™ Floor Carpet is a unique textured vinyl with a high-tack peel-and-stick adhesive backing designed for low pile commercial grade carpets as well as interior hard flooring.

- Easy to apply
- High-tack adhesive, clean removal
- Digital direct full color print
- Commercial Grade Carpets and Hard Flooring
- Choice of square cut or die-cut shape
- Indoor Short-term use

EZ STIK™ Floor Carpet is designed for short-term applications that require major impact where standard forms of advertising may not be practical or possible.

- Directional Signage for Break-out Sessions
- Tradeshow Graphics
- Special Event Announcements
- Convention Centers
- Sponsorships

EZ STIK™ Floor Carpet is printed digital direct in full color providing rich, vibrant images making your floor messages eye-catching. Graphics can be square cut or die cut into almost any shape adding character to your unique look or presentation. It's the go-to floor graphic choice for use at hotel ballrooms, convention centers and trade shows providing unique and eye-catching directional signage.



Make the most of your message on Carpet and Hard Flooring

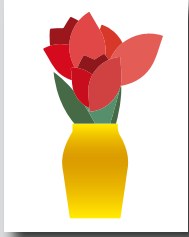
EZ STIK™ Floor Carpet / Item: EZFC

Use: Indoor use. Apply to commercial grade carpets and most types of hard flooring. Durability rating: 1-2 months (depending on traffic).

Media: 8mil

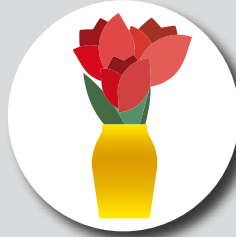
Adhesive: acrylic, high-tack, removable

Finishing Cut Options – While all EZ STIK™ graphics come standard with a square cut trim, many of the products can be finished with custom cutting, providing an enhanced visual appearance. Below are the cut options available on EZ STIK™ Floor Carpet.



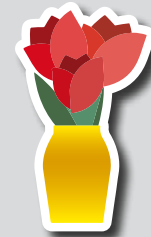
Standard Square Cut

Rectangle or square shape with straight sides and square corners.



Simple Shape Cut

Circle, diamond, triangle, rounded corners, etc. Additional charges may apply.



Cloud Cut

A single-piece graphic that is cut to shape with a "cloud" margin (white or colored) around the design. Additional charges may apply.

General Application Instructions

For specialty graphics to properly adhere, the application surface must be clean: free of oils, grease, dust, and debris. There must be no loose areas on the application surface (like loose carpet threading, varnish, flooring veneer, etc.) as the adhesive could lift or disturb the loose elements when the graphic is removed.

Apply all specialty graphics in temperatures that are neither too hot nor too cold. The optimum temperature for installing is between 65° and 72°F. Graphics can be installed as low as 50° and up to 90°F. Larger outdoor graphics are easier to apply in the protection of shade.

Floors: Install on a clean and dry surface. If floor surface is wet, allow to dry completely before installing graphic. Best practices: Vacuum and/or sweep floor surface. Use firm pressure when applying the graphic to help ensure a proper adhesion bond.

Other Surfaces: For all other applications, make sure surface is clean and dry. Choose a location to test graphic adhesion. Because surface conditions and properties can vary widely, it is ultimately the responsibility of the end user to test the bond and effective removal of the adhesive graphic from the chosen surface.

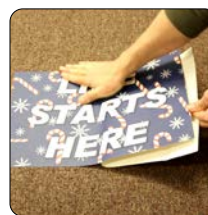
Method: Use overlapping strokes as you apply the graphic to the surface. If you don't have an installation squeegee, your hand (open palm and fingers) can be used to apply pressure and smooth the graphic out during application.



1) Surface Prep.
Make sure surface is clear of debris.



2) Peel.
Begin to partially remove backing.



3) Stick.
Use overlapping strokes to apply the graphic.



4) Apply Pressure.
With a wiping motion, firmly press entire surface to activate adhesive.

For video demonstrations of specialty graphics applications, including tips and techniques, visit: amatterofgraphics.com