



**EZ STIK™ Floor Multi-Surface is a floor vinyl with a medium-tack peel-and-stick adhesive backing designed for a wide variety of interior floor surfaces:**

**Hard Flooring:** Floors with a natural smooth polished or wax polished surface including ceramic tile, sealed (polished) concrete, linoleum, Vinyl Composition Tile (VCT), laminate wood flooring and marble. Not recommended for floors with an oil-type finish.

**Carpet Flooring:** Floors with commercial-grade carpeting with a very low pile. Performs best on carpeting that has a tight loop surface texture. Not recommended for use on loose nap cut carpeting. Expect a shorter life when used on carpeting.

- Easy to apply
- Medium-tack, removable adhesive
- Digital direct full color print
- Laminated for protection
- Meets industry standards for slip resistance
- Choice of square cut or die-cut shape
- Indoor use only

Stop customers in their tracks with Floor Graphics! From retail POP to sports arenas, convention centers, hospitals, warehouses, corporate offices, restaurants, airports and public areas, EZ STIK™ Floor Multi-Surface graphics provide the perfect compliment to any marketing or branding campaign. Choose from two styles:

**(EZFM) EZ STIK™ Floor Multi-Surface Standard:** Graphic with a smooth lamination (6 mil) meeting industry standards for slip-resistance. Longevity: up to 6 months (depending on traffic).

**(FMHD) EZ STIK™ Floor Multi-Surface Heavy-Duty:** Graphic features a textured heavy-duty laminate (12 mil) meeting industry standards for slip-resistance. Longevity: up to 9 months (depending on traffic).



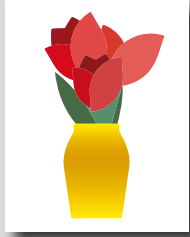
**EZ STIK™ Floor Multi-Surface / Items: EZFM, FMHD**

**Use:** Indoor use only. Durability rating: Standard up to 3 months; HD up to 9 months for HD (depending on traffic).

**Media:** Std is 6 mil, HD is 12 mil

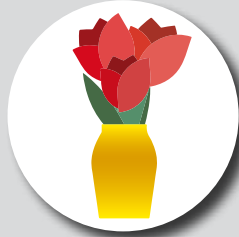
**Adhesive:** acrylic, medium-tack, removable

**Finishing Cut Options** – While all EZ STIK™ graphics come standard with a square cut trim, many of the products can be finished with custom cutting, providing an enhanced visual appearance. Below are the cut options available on EZ STIK™ Floor Multi-Surface Standard and Heavy-Duty.



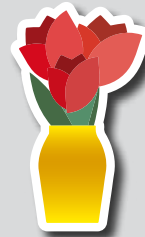
**Standard Square Cut**

Rectangle or square shape with straight sides and square corners.



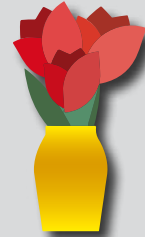
**Simple Shape Cut**

Circle, diamond, triangle, rounded corners, etc. Additional charges may apply.



**Cloud Cut**

A single-piece graphic that is cut to shape with a "cloud" margin (white or colored) around the design. Additional charges may apply.



**Contour Cut**

A single-piece graphic that is cut to shape with no margin around the design (cut to color). Some limitations may apply. Additional charges may apply.

**General Application Instructions**

For specialty graphics to properly adhere, the application surface must be clean: free of oils, grease, dust, and debris. There must be no loose areas on the application surface (like flaking concrete, etc.) as the adhesive could lift or disturb the loose elements when the graphic is removed.

Apply all specialty graphics in temperatures that are neither too hot nor too cold. The optimum temperature for installing is between 65° and 72°F. Graphics can be installed as low as 50° and up to 90°F. Larger outdoor graphics are easier to apply in the protection of shade.

**Indoor Floors:** Install on a clean and dry surface. If floor surface is wet, allow to dry completely before installing graphic. Best practices: Sweep and mop and Install after the surface has completely dried. Use firm pressure when applying the graphic to help ensure a proper adhesion bond. Adhesive reaches its full bond strength in 24-36 hours.

**Other Surfaces:** For all other applications, make sure surface is clean and dry. Choose a location to test graphic adhesion. Because surface conditions and properties can vary widely, it is ultimately the responsibility of the end user to test the bond and effective removal of the adhesive graphic from the chosen surface.

**Method:** Use overlapping strokes as you apply the graphic to the surface. If you don't have an installation squeegee, your hand (open palm and fingers) can be used to apply pressure and smooth the graphic out during application.



**1) Surface Prep.**  
Wipe clean.



**2) Peel.**  
Begin to partially remove backing.



**3) Stick.**  
Use overlapping strokes to apply the graphic.



**4) Apply Pressure.**  
With a wiping motion, firmly press entire surface to activate adhesive.

For video demonstrations of specialty graphics applications, including tips and techniques, visit: [amatterofgraphics.com](http://amatterofgraphics.com)