



Lead the way with EZ STIK™ Footprints. The use of multiple small graphics in succession can have a greater visual impact than one single large graphic. The cause and effect of repetition is in full play when these unique graphics are used.

Printed and cut to life-size footprint shapes (approximately 11" in length) and sold as a pair (left and right). Peel and stick format provides quick application for anyone and they are easily removed after use.

Available in different media's to accommodate a variety of flooring situations.

Floor Multi-Purpose – Short-term use for indoor smooth floors as well as commercial grade carpeting. Standard and Heavy-Duty available.

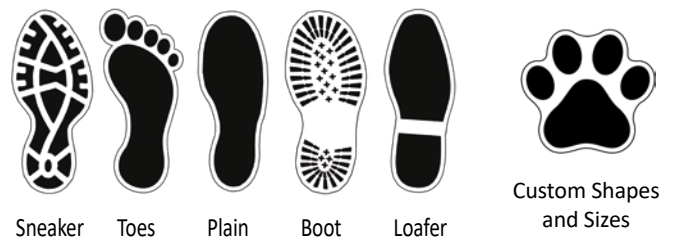
Floor Smooth – Short-term use for indoor smooth floors. Standard and Heavy-Duty available.

Floor Carpet – Short-term indoor use for commercial grade carpets as well as interior hard flooring.

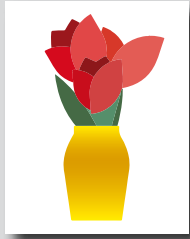
Outdoor Textured – Short-term outdoor use for unsealed concrete or asphalt surfaces.

- Easy to apply
- Multiple media choices
- Digital direct full color print
- 5 Standard Shapes / Custom Shape Options
- Message Marketing — Unique Visual Impact

There are five standard styles to choose from (sneaker, loafer, boot, plain, and toes) or for a truly unique look, you could have a custom shape like paw prints, arrows, flip-flop sandals, corporate logos, even emoji's – the possibilities are endless. These graphics are ideal for promoting brand awareness and directing foot traffic in a creative style. One step beyond!

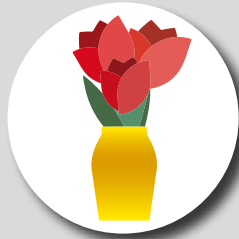


Finishing Cut Options – While all EZ STIK™ graphics come standard with a square cut trim, many of the products can be finished with custom cutting, providing an enhanced visual appearance. In addition to the available footprint shapes, below are other cut options available.



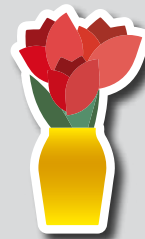
Standard Square Cut

Rectangle or square shape with straight sides and square corners.



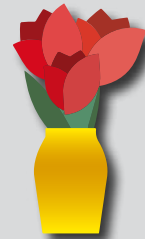
Simple Shape Cut

Circle, diamond, triangle, rounded corners, etc. Additional charges may apply.



Cloud Cut

A single-piece graphic that is cut to shape with a "cloud" margin (white or colored) around the design. Additional charges may apply.



Contour Cut

A single-piece graphic that is cut to shape with no margin around the design (cut to color). Some limitations may apply. Additional charges may apply.

General Application Instructions

For specialty graphics to properly adhere, the application surface must be clean: free of oils, grease, dust, and debris. There must be no loose areas on the application surface (like flaking concrete, etc.) as the adhesive could lift or disturb the loose elements when the graphic is removed.

Apply all specialty graphics in temperatures that are neither too hot nor too cold. The optimum temperature for installing is between 65° and 72°F. Graphics can be installed as low as 50° and up to 90°F. Larger outdoor graphics are easier to apply in the protection of shade.

Outdoor Floors: Install on a clean and dry surface. If floor surface is wet, allow to dry completely before installing graphic. Best practices: Sweep and mop and Install after the surface has completely dried. Use firm pressure when applying the graphic to help ensure a proper adhesion bond. Adhesive reaches its full bond strength in 24-36 hours.

Other Surfaces: For all other applications, make sure surface is clean and dry. Choose a location to test graphic adhesion. Because surface conditions and properties can vary widely, it is ultimately the responsibility of the end user to test the bond and effective removal of the adhesive graphic from the chosen surface.

Method: Use overlapping strokes as you apply the graphic to the surface. If you don't have an installation squeegee, your hand (open palm and fingers) can be used to apply pressure and smooth the graphic out during application.

