

**EZ STIK™ Smooth is a custom printed, adhesive backed, vinyl graphic for walls and other smooth surfaces like doors, cabinets, counters, laptops and windows.**

- Easy to apply, medium-tack removable adhesive
- Clean, residue free removal
- Digital direct full color print
- Square cut or shape cut available
- Laminated for lasting, durable performance

EZ STIK™ Smooth is printed digital direct in full color providing vibrant photo-realistic images that make your messages attractive and visually engaging. From small decals to large posters, graphics can be square cut or die cut into almost any shape adding character to your unique presentation.

The graphics are laminated for scratch and UV protection adding life and longevity to the luster sheen. With it's unique medium-tack adhesive, the graphics are easy to apply. And when it's time to change the message, because of the signature adhesive, the graphics are easily removed without leaving any sticky residue behind.



Why EZ STIK™ Graphics? Windows, walls, floors and doors represent valuable advertising space for dynamic messages and yet most people don't think about these alternative locations. Stand out in the crowd and let us help you put your next message where it will be noticed.



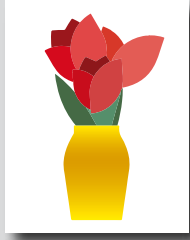
**EZ STIK™ Smooth / Item: EZWS**

**Use:** Indoor/outdoor. Apply to any smooth surface. When applied to surfaces like walls, media performs best on gloss or semi-gloss paint finishes. Wall finish can be smooth or with orange-peel type, light "splatter" texture.

**Media:** 6mil vinyl including protective laminate

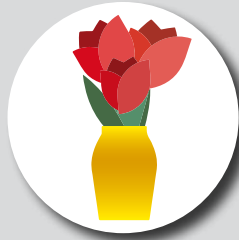
**Adhesive:** acrylic, medium-tack, removable, clean removal

**Finishing Cut Options** – While all EZ STIK™ graphics come standard with a square cut trim, many of the products can be finished with custom cutting, providing an enhanced visual appearance. Below are the cut options available on EZ STIK™ Smooth.



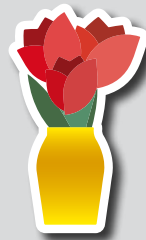
**Standard Square Cut**

Rectangle or square shape with straight sides and square corners.



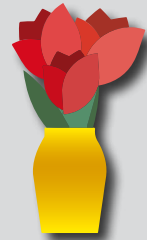
**Simple Shape Cut**

Circle, diamond, triangle, rounded corners, etc. Additional charges may apply.



**Cloud Cut**

A single-piece graphic that is cut to shape with a "cloud" margin (white or colored) around the design. Additional charges may apply.



**Contour Cut**

A single-piece graphic that is cut to shape with no margin around the design (cut to color). Some limitations may apply. Additional charges may apply.

**General Application Instructions**

For specialty graphics to properly adhere, the application surface must be clean: free of oils, grease, dust, and debris. If the surface has been painted recently, the surface must be allowed to cure for at least 45 days prior to graphic application.

Apply all specialty graphics in temperatures that are neither too hot nor too cold. The optimum temperature for installing is between 65° and 72°F. Graphics can be installed as low as 50° and up to 90°F. Larger outdoor graphics are easier to apply in the protection of shade.

Walls: Install on a clean and dry surface. Best practices: wipe dust from wall surface with a clean (slightly damp) cloth and allow to dry. Wall graphics adhere best to walls with gloss paint.

Other Surfaces: For all other applications, make sure surface is clean and dry. Choose a location to test graphic adhesion. Because surface conditions and properties can vary widely, it is ultimately the responsibility of the end user to test the bond and effective removal of the adhesive graphic from the chosen surface.

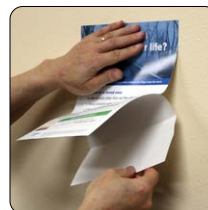
Method: Use overlapping strokes as you apply the graphic to the surface. If you don't have an installation squeegee, a stiff plastic (like a credit card) can be helpful to smooth the graphic out during application.



**1) Surface Prep.**  
Wipe clean.



**2) Peel.**  
Begin to remove backing.



**3) Stick.**  
Use overlapping strokes to apply the graphic.



**4) Apply Pressure.**  
With a wiping motion, firmly press entire surface to activate adhesive.

For video demonstrations of specialty graphics applications, including tips and techniques, visit: [amatterofgraphics.com](http://amatterofgraphics.com)