



EZ STIK™ Wall Fabric is our most versatile, easy to install, peel & stick product. It's a polyester fabric that adheres to virtually any flat, non-porous surface.

- Designed for wall graphics such as spirit messages, art prints, wall displays, or corporate branding
- Digital direct full color print, scratch resistant
- Easy to apply, low-tack removable adhesive
- Remove and reposition multiple times
- Residue free clean removal
- Square cut or shape cut available

EZ STIK™ Wall Fabric is a polyester fabric that is printed digital direct in full color providing beautiful non-glare images. The graphic can be square cut or die cut into almost any shape making the visual presentation even more stunning and memorable. With its unique low-tack adhesive, EZ STIK™ Wall Fabric can be re-positioned multiple times without losing adhesion. Whenever it is removed, it leaves no sticky residue behind.

- Sports Action Shots
- Corp. Advertising
- Artwork Murals
- Retail Store Ads
- Pictures
- Company Logo
- Wallpaper Borders
- Team Branding



Windows, walls, floors and doors represent valuable advertising space for dynamic messages and yet most people don't think about these alternative locations. Stand out in the crowd and let us help you put your next message where it will be noticed.

Simple
Shape Cuts
Make a
Striking Visual



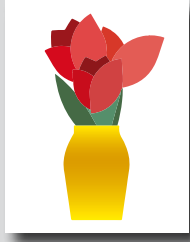
EZ STIK™ Wall Fabric / Item: EZWF

Use: Indoor. Apply to any smooth surface. When applied to surfaces like walls, media performs best on gloss or semi-gloss paint finishes. Wall finish can be smooth or with orange-peel type, light "splatter" texture.

Media: 6mil polyester fabric

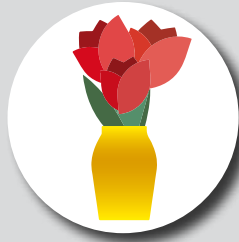
Adhesive: acrylic, low-tack, removable, clean removal

Finishing Cut Options – While all EZ STIK™ graphics come standard with a square cut trim, many of the products can be finished with custom cutting, providing an enhanced visual appearance. Below are the cut options available on EZ STIK™ Wall Fabric.



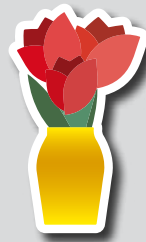
Standard Square Cut

Rectangle or square shape with straight sides and square corners.



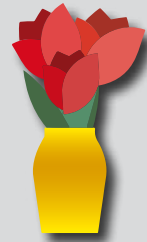
Simple Shape Cut

Circle, diamond, triangle, rounded corners, etc. Additional charges may apply.



Cloud Cut

A single-piece graphic that is cut to shape with a "cloud" margin (white or colored) around the design. Additional charges may apply.



Contour Cut

A single-piece graphic that is cut to shape with no margin around the design (cut to color). Some limitations may apply. Additional charges may apply.

General Application Instructions

For specialty graphics to properly adhere, the application surface must be clean: free of oils, grease, dust, and debris. If the surface has been painted recently, the surface must be allowed to cure for at least 45 days prior to graphic application.

Apply all specialty graphics in temperatures that are neither too hot nor too cold. The optimum temperature for installing is between 65° and 72°F. Graphics can be installed as low as 50° and up to 90°F. Larger outdoor graphics are easier to apply in the protection of shade.

Walls: Install on a clean and dry surface. Best practices: wipe dust from wall surface with a clean (slightly damp) cloth and allow to dry. Wall graphics adhere best to walls with gloss paint.

Other Surfaces: For all other applications, make sure surface is clean and dry. Choose a location to test graphic adhesion. Because surface conditions and properties can vary widely, it is ultimately the responsibility of the end user to test the bond and effective removal of the adhesive graphic from the chosen surface.

Method: Use overlapping strokes as you apply the graphic to the surface. If you don't have an installation squeegee, a stiff plastic (like a credit card) can be helpful to smooth the graphic out during application.



1) Surface Prep.
Wipe clean.



2) Peel.
Begin to remove backing.



3) Stick.
Use overlapping strokes to apply the graphic.



4) Apply Pressure.
With a wiping motion, firmly press entire surface to activate adhesive.

For video demonstrations of specialty graphics applications, including tips and techniques, visit: amatterofgraphics.com