



**EZ STIK™ Window Double-Sided is a custom printed vinyl graphic designed to be installed on the inside of windows and be viewed from both sides.**

- Easy to apply to inside windows
- Low-tack adhesive, clean removal
- Digital direct full color
- Double-Sided print
- Blockout layer (no image bleed-thru)
- Square cut standard or shape cut available
- Any size from small decals to large window graphics

EZ STIK™ Window Double-Sided is the best of both worlds — a vibrant window graphic with printing on both sides! This provides the option of a different message on each side of the graphic, allowing the business to make the most of their window marketing – get ‘em while the patrons are coming and going!

Because of our signature block-out layer, this window graphic is unlike most double-sided vinyl window graphics. Other graphics often experience “image bleed” when light is shown from the opposite side. EZ STIK™ Window Double-Sided provides a vibrant crisp image on each side with no image bleed-thru.



**EZ STIK™ Window Double-Sided / Item: GRDS**

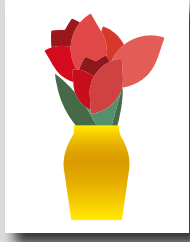
**Use:** Interior. Face adhesive for inside mount on retail or residential window glass. Not recommended for use on vehicles.

**Thickness:** 8mil

**Adhesive:** acrylic, low-tack, removable, clean removal

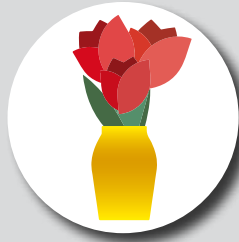
EZ STIK™ Window Double-Sided is printed digital direct in full color providing vibrant images, making your window messages stand out. From small decals to large window messages, graphics can be square cut or die cut into almost any shape, adding character to your unique window presentation. With it’s unique low-tack adhesive, these graphics are easy-to-apply and when removed, will leave no sticky residue behind.

**Finishing Cut Options** – While all EZ STIK™ graphics come standard with a square cut trim, many of the products can be finished with custom cutting, providing an enhanced visual appearance. Below are the cut options available on EZ STIK™ Glass Double-Sided.



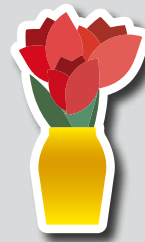
**Standard Square Cut**

Rectangle or square shape with straight sides and square corners.



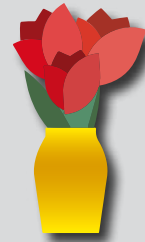
**Simple Shape Cut**

Circle, diamond, triangle, rounded corners, etc. Additional charges may apply.



**Cloud Cut**

A single-piece graphic that is cut to shape with a "cloud" margin (white or colored) around the design. Additional charges may apply.



**Contour Cut**

A single-piece graphic that is cut to shape with no margin around the design (cut to color). Some limitations may apply. Additional charges may apply.

**General Application Instructions**

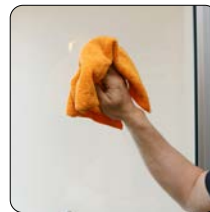
For specialty graphics to properly adhere, the application surface must be clean: free of oils, grease, dust, and debris.

Apply all specialty graphics in temperatures that are neither too hot nor too cold. The optimum temperature for installing is between 65° and 72°F. Graphics can be installed as low as 50° and up to 90°F. Larger outdoor graphics are easier to apply in the protection of shade.

Windows/Glass: Install on a clean and dry surface. Clean glass surface with water or a common glass cleaner. Best practices: A razor-blade scraper with glass cleaner (or water) can be used to remove little bits of crud. Using a paper towel or lint-free rag, wipe glass surface with isopropyl alcohol or denatured alcohol.

Other Surfaces: For all other applications, make sure surface is clean and dry. Choose a location to test graphic adhesion. Because surface conditions and properties can vary widely, it is ultimately the responsibility of the end user to test the bond and effective removal of the adhesive graphic from the chosen surface.

Method: Use overlapping strokes as you apply the graphic to the surface. If you don't have an installation squeegee, a stiff plastic (like a credit card) can be helpful to smooth the graphic out during application.



**1) Surface Prep.**  
Wipe glass clean.



**2) Peel.**  
Begin to remove backing.



**3) Stick.**  
Use overlapping strokes to apply the graphic.



**4) Apply Pressure.**  
With a wiping motion, firmly press entire surface to activate adhesive.

For video demonstrations of specialty graphics applications, including tips and techniques, visit: [amatterofgraphics.com](http://amatterofgraphics.com)