



**EZ STIK™ Window Reverse is a custom printed vinyl graphic designed to be installed on the inside of windows to be viewed from the outside.**

- Designed for window graphics such as storefronts or POP retail applications
- Easy to apply, low-tack, removable adhesive
- Digital direct full color print (one-sided)
- Clean, residue free removal
- Long-lasting alternative to “static clings”
- Square cut standard or shape cut available
- Any size from small decals to large window graphics

*NOTE: If you are looking for a double-sided window graphic, ask about EZ STIK™ Window Double-Sided (Item: GRDS)*

Perfect for showroom windows, bookstores, and display cases. The adhesive is on the face of the graphic and because it is mounted to the inside of the window (facing the outside), the graphic is within the protection of the location and is a clever solution for establishments where local ordinances strictly prohibit outdoor sign application.



EZ STIK™ Window Reverse is printed digital direct (one-sided) in full color, providing vibrant images that make your window messages stand out. From small decals to large window messages, graphics can be square cut or shape cut (die cut) into almost any shape, adding character to your unique window presentation. With its unique low-tack adhesive, these graphics are easy-to-apply and when removed, will leave no sticky residue behind.

Why EZ STIK Graphics? Windows, walls, floors and doors represent valuable advertising space for dynamic messages and yet most people don't think about these alternative locations. Stand out in the crowd and let us help you put your next message where it will be noticed.

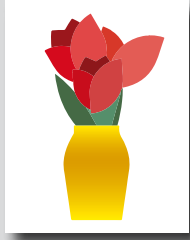
**EZ STIK™ Window Reverse / Item: EZGR**

**Use:** Interior. Face adhesive for inside mount on retail or residential window glass. Not recommended for use on vehicles.

**Thickness:** 6mil

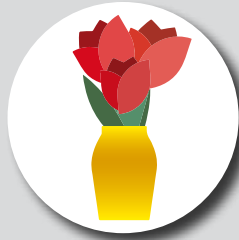
**Adhesive:** acrylic, low-tack, removable, clean removal

**Finishing Cut Options** – While all EZ STIK™ graphics come standard with a square cut trim, many of the products can be finished with custom cutting, providing an enhanced visual appearance. Below are the cut options available on EZ STIK™ Window Reverse.



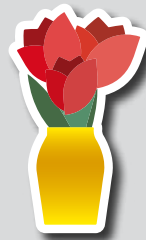
**Standard Square Cut**

Rectangle or square shape with straight sides and square corners.



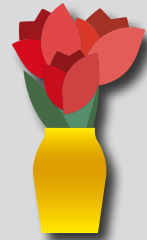
**Simple Shape Cut**

Circle, diamond, triangle, rounded corners, etc. Additional charges may apply.



**Cloud Cut**

A single-piece graphic that is cut to shape with a "cloud" margin (white or colored) around the design. Additional charges may apply.



**Contour Cut**

A single-piece graphic that is cut to shape with no margin around the design (cut to color). Some limitations may apply. Additional charges may apply.

**General Application Instructions**

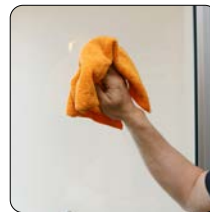
For specialty graphics to properly adhere, the application surface must be clean: free of oils, grease, dust, and debris.

Apply all specialty graphics in temperatures that are neither too hot nor too cold. The optimum temperature for installing is between 65° and 72°F. Graphics can be installed as low as 50° and up to 90°F. Larger outdoor graphics are easier to apply in the protection of shade.

Windows/Glass: Install on a clean and dry surface. Clean glass surface with water or a common glass cleaner. Best practices: A razor-blade scraper with glass cleaner (or water) can be used to remove little bits of crud. Using a paper towel or lint-free rag, wipe glass surface with isopropyl alcohol or denatured alcohol.

Other Surfaces: For all other applications, make sure surface is clean and dry. Choose a location to test graphic adhesion. Because surface conditions and properties can vary widely, it is ultimately the responsibility of the end user to test the bond and effective removal of the adhesive graphic from the chosen surface.

Method: Use overlapping strokes as you apply the graphic to the surface. If you don't have an installation squeegee, a stiff plastic (like a credit card) can be helpful to smooth the graphic out during application.



**1) Surface Prep.**  
Wipe glass clean.



**2) Peel.**  
Begin to remove backing.



**3) Stick.**  
Use overlapping strokes to apply the graphic.



**4) Apply Pressure.**  
With a wiping motion, firmly press entire surface to activate adhesive.

For video demonstrations of specialty graphics applications, including tips and techniques, visit: [amatterofgraphics.com](http://amatterofgraphics.com)