



EZ STIK™ Window Smooth is a custom printed, adhesive backed, vinyl graphic used especially on retail glass windows and mirrors.

- Indoor/Outdoor (Weather resistant)
- Easy to apply, low-tack removable adhesive
- Clean, residue free removal
- Great alternative to “static clings”
- Square cut or shape cut available
- Laminated for protection, long-term durability

EZ STIK™ Window Smooth was originally designed for retail windows (interior or exterior). It's the type of product you often see used on the windows at many fast-food establishments and convenience stores. Now available for you to use on any retail/office glass surface.

- Retail Windows
- Display Cases
- Glass Doors
- Bathroom Mirrors

EZ STIK™ Window Smooth is printed digital direct in full color providing vibrant images that make your window messages stand out. From small decals, to medium-sized posters, to full-window sized marketing messages, graphics can be square cut or die cut into almost any shape adding character to your unique window presentation.

The graphics are laminated for scratch and UV protection, adding life and longevity to the luster sheen (up to 3-years outdoor use). With it's unique low-tack adhesive, these graphics are easy-to-apply and when removed, will leave no sticky residue behind.



EZ STIK™ Window Smooth / Item: EZGS

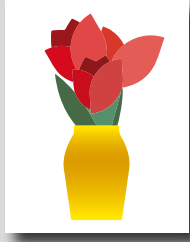
Use: Indoor/outdoor retail or residential window glass. Not recommended for use on vehicles (ask about vehicle grade graphics).

Media: 6mil vinyl including protective laminate

Adhesive: acrylic, low-tack, removable, clean removal

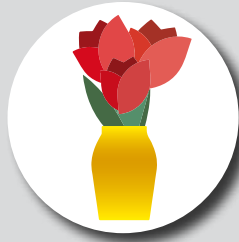


Finishing Cut Options – While all EZ STIK™ graphics come standard with a square cut trim, many of the products can be finished with custom cutting, providing an enhanced visual appearance. Below are the cut options available on EZ STIK™ Window Smooth.



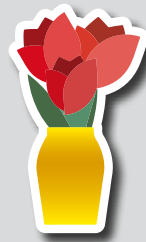
Standard Square Cut

Rectangle or square shape with straight sides and square corners.



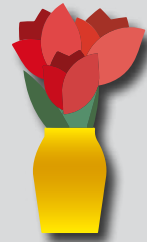
Simple Shape Cut

Circle, diamond, triangle, rounded corners, etc. Additional charges may apply.



Cloud Cut

A single-piece graphic that is cut to shape with a "cloud" margin (white or colored) around the design. Additional charges may apply.



Contour Cut

A single-piece graphic that is cut to shape with no margin around the design (cut to color). Some limitations may apply. Additional charges may apply.

General Application Instructions

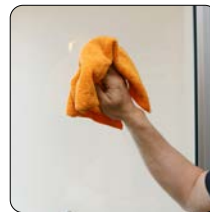
For specialty graphics to properly adhere, the application surface must be clean: free of oils, grease, dust, and debris.

Apply all specialty graphics in temperatures that are neither too hot nor too cold. The optimum temperature for installing is between 65° and 72°F. Graphics can be installed as low as 50° and up to 90°F. Larger outdoor graphics are easier to apply in the protection of shade.

Windows/Glass: Install on a clean and dry surface. Clean glass surface with water or a common glass cleaner. Best practices: A razor-blade scraper with glass cleaner (or water) can be used to remove little bits of crud. Using a paper towel or lint-free rag, wipe glass surface with isopropyl alcohol or denatured alcohol.

Other Surfaces: For all other applications, make sure surface is clean and dry. Choose a location to test graphic adhesion. Because surface conditions and properties can vary widely, it is ultimately the responsibility of the end user to test the bond and effective removal of the adhesive graphic from the chosen surface.

Method: Use overlapping strokes as you apply the graphic to the surface. If you don't have an installation squeegee, a stiff plastic (like a credit card) can be helpful to smooth the graphic out during application.



1) Surface Prep.
Wipe glass clean.



2) Peel.
Begin to remove backing.



3) Stick.
Use overlapping strokes to apply the graphic.



4) Apply Pressure.
With a wiping motion, firmly press entire surface to activate adhesive.

For video demonstrations of specialty graphics applications, including tips and techniques, visit: amatterofgraphics.com