

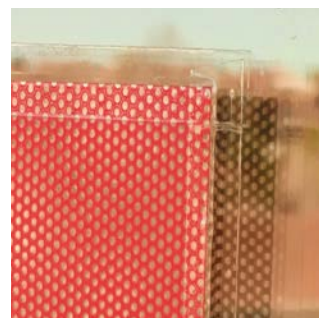
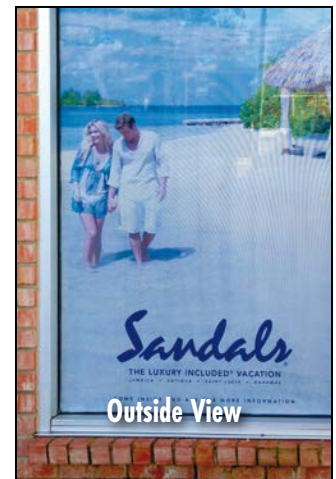


EZ STIK™ Window Vision is a custom printed, adhesive-backed, vinyl graphic with a laminate coating designed for retail exterior windows with a printed marketing message on the outside while providing a “see thru” feature from the inside.

- Designed for window graphics such as storefronts, office buildings and retail applications
- Digital direct full color print
- Laminated for protection (extended longevity)
- Unique one-way appearance
- Easy to apply, removable adhesive
- Clean, residue free removal

Make a statement with EZ STIK™ Window Vision: it's the ultimate way to dress up any storefront or office window with promotional décor or advertising. EZ STIK™ Window Vision (outside mount) is a perforated vinyl window graphic that appears opaque from the outside, but allows visibility from the inside. With a specially-designed 60/40 perforation pattern, your graphics achieve a unique one-way appearance that really makes an impact. Printed digital direct in full color, EZ STIK™ Window Vision makes your window messages visually distinctive.

With its unique adhesive, these graphics are easy-to-apply and when removed, will leave no sticky residue behind. The graphics are treated with a laminate providing scratch and UV protecting adding life and longevity to the graphic. The tiny holes are what allow you to see through the graphic. Note: Because of the lamination that is used to protect the graphic, the view through the graphic is a little fuzzy compared to clean, clear glass.



Close up showing edge tape finish.

Edge Tape is included with each purchase and is to be applied to the perimeter of the graphic. When used at the time of installation, it extends the life of the graphic and prevents the edges from curling in adverse weather conditions.

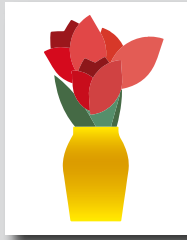
EZ STIK™ Window Vision (Outside Mount) / Item: EZGV

Use: Outdoor use on retail/office window glass. If used on interior windows (i.e. office hallway) the viewing experience will be less impressive.

Thickness: 10mil

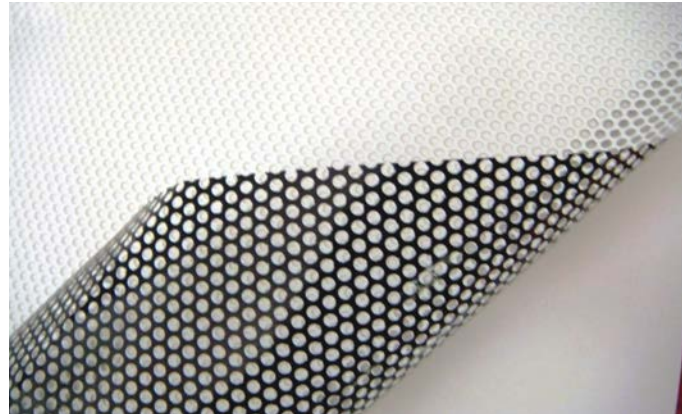
Adhesive: acrylic, removable, clean removal

Finishing Cut Options – While many EZ STIK™ graphics can be custom shape cut, EZ STIK™ Window Vision is recommended for a square cut only.



Standard Square Cut

Rectangle or square shape with straight sides and square corners.



Close up showing the hole pattern.
Print Side white(front) / Adhesive side black (back)

General Application Instructions

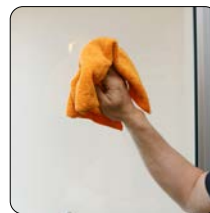
For specialty graphics to properly adhere, the application surface must be clean: free of oils, grease, dust, and debris.

Apply all specialty graphics in temperatures that are neither too hot nor too cold. The optimum temperature for installing is between 65° and 72°F. Graphics can be installed as low as 50° and up to 90°F. Larger outdoor graphics are easier to apply in the protection of shade.

Windows/Glass: Install on a clean and dry surface. Clean glass surface with water or a common glass cleaner. Best practices: A razor-blade scraper with glass cleaner (or water) can be used to remove little bits of crud. Using a paper towel or lint-free rag, wipe glass surface with isopropyl alcohol or denatured alcohol.

Other Surfaces: For all other applications, make sure surface is clean and dry. Choose a location to test graphic adhesion. Because surface conditions and properties can vary widely, it is ultimately the responsibility of the end user to test the bond and effective removal of the adhesive graphic from the chosen surface.

Method: Use overlapping strokes as you apply the graphic to the surface. If you don't have an installation squeegee, a stiff plastic (like a credit card) can be helpful to smooth the graphic out during application.



1) Surface Prep.
Wipe glass clean.



2) Peel.
Begin to remove backing.



3) Stick.
Use overlapping strokes to apply the graphic.



4) Apply Pressure.
With a wiping motion, firmly press entire surface to activate adhesive.

For video demonstrations of specialty graphics applications, including tips and techniques, visit: amatterofgraphics.com