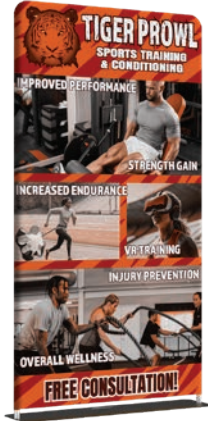


Fabric Tube Frame Stands

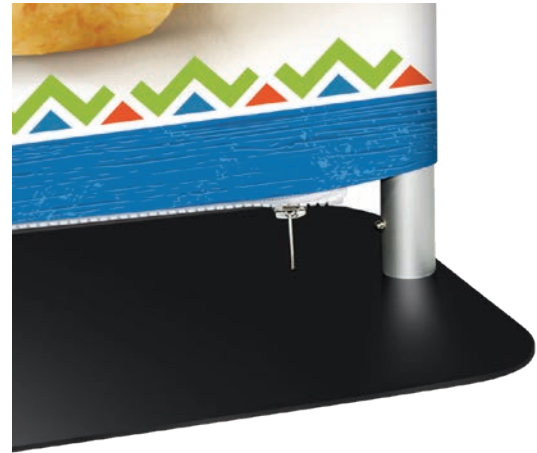
Items: TS-SPC3, TS-SPC4



TS-SPC3



TS-SPC4



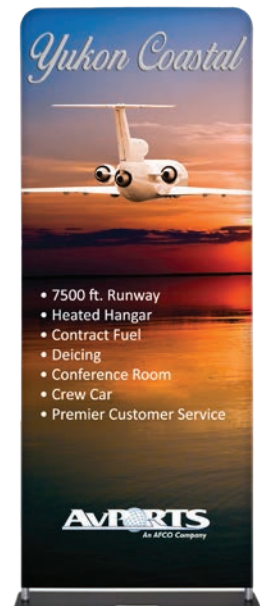
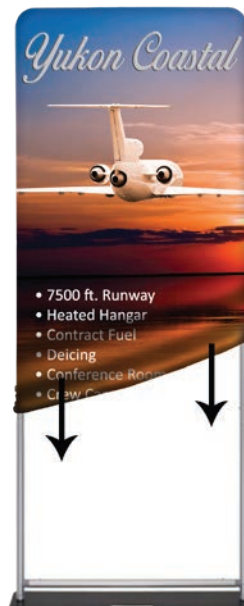
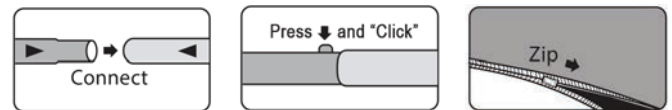
Tube Frame Stands have interlocking tube hardware that assembles easily and the stretch fabric graphic slips over the frame like a “pillow-case”. Its premium construction and unique features, such as a zipper closure, ensure a memorable brand presence with minimal fuss.

- Anodized Aluminum Tube Frame Clicks Together (No Tools Required)
- Steel Base for durability and stability
- Dye Sub Pillowcase Graphics (9 oz. polyester)
- Digital Print at 720 x 720 resolution
- Double-Sided for Maximum Impact
- Includes Canvas Carrying Bag
- Indoor Use Only
- One-Year Warranty*
- Replacement Graphics Available



Tube Frame Stands are popular for trade show exhibits. The simplicity of the fabric and tube frame makes this a reliable display solution. Easy to ship. Easy to set up. Easy to change the fabric graphic. Fabric comes standard with print included on both the front and back.

The frame features anodized aluminum tube sections that interlock and “click” in place. With the included carrying bag, it’s convenient to transport to any location.



Fabric Tube Frame Stands

Items: TS-SPC3, TS-SPC4

Hardware: Aluminum tube frame, steel base, black zippered carry case.

Media: 9 oz. Fabric with Full Color, Digital Dye-Sublimated Print.

Warranty: 1 year warranty*

Models and Sizes available:

Pillow Case Stand

TS-SPC3: 36"W x 90"H

TS-SPC4: 48"W x 90"H



Set Up Instructions

Step 1

Prepare the stand.
Remove parts from case.



Step 2

Arrange and assemble the frame by connecting the "click" tubes together.



Step 3

To install the graphic, slide the graphic from the top of the frame towards the bottom.



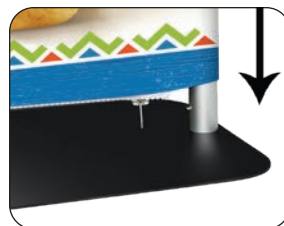
Step 4

Zip the bottom of the graphic.



Step 5

Connect the frame onto the base.



*Hardware Warranty warrants product against defects in materials and workmanship. Graphic Warranty covers the print vibrancy and media performance. Neither warranty covers damage due to accidents, abuse, mishandling, over-tightening components, or normal wear and tear. Any repair or replacement is at discretion of factory.