



TS-CPC8



TS-SPC10



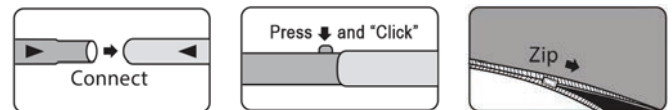
TS-CPC6

Tube Frame Wall Displays have interlocking tube hardware that assembles easily and the stretch fabric graphic slips over the frame like a “pillow-case”. Its premium construction and unique features, such as a zipper closure, ensure a memorable brand presence with minimal fuss.

- Anodized Aluminum Tube Frame
Clicks Together (No Tools Required)
- Curved and Straight Wall Configurations
- Dye Sub Pillowcase Graphics
(9 oz. polyester)
- Digital Print at 720 x 720 resolution
- Double-Sided for Maximum Impact
- Includes Canvas Carrying Bag
- Indoor Use Only
- One-Year Warranty*
- Replacement Graphics Available

Tube Frame Wall Displays are popular for trade show exhibits. The simplicity of the fabric and tube frame makes this a reliable display solution. Easy to ship. Easy to set up. Easy to change the fabric graphic. Fabric comes standard with print included on both the front and back.

The frame features anodized aluminum tube sections that interlock and “click” in place. With the included carrying bag, it’s convenient to transport to any location.



TS-SPC8

Fabric Tube Frame Wall Displays

Items: TS-SPC, TS-CPC

Hardware: Aluminum tube frame, black zippered carry case.

Media: 9 oz. Fabric with Full Color, Digital Dye-Sublimated Print.

Warranty: 1 year warranty*

Optional Hardware: Lighting can transform a display into a dynamic visual. Our lighting kit includes two LED light arms with power adapters (110v, 5 amps). ITEM: TS-LED



Models and Sizes available:

Straight Wall Display

- TS-SPC8: 89"W x 89"H
- TS-SPC10: 112"W x 89"H
- TS-SPC20: 236"W x 89"H

Models and Sizes available:

Curved Wall Display

- TS-CPC6: 72"W x 60"H
- TS-CPC8: 96"W x 89"H
- TS-CPC10: 120"W x 89"H

Set Up Instructions

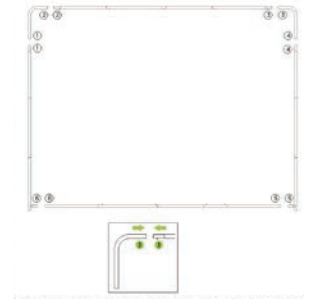
Step 1

Prepare the stand.
Remove parts from case.



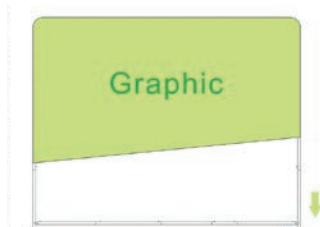
Step 2

Arrange and assemble the frame by connecting the "click" tubes together.



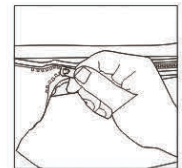
Step 3

To install the graphic, slide the graphic from the top the frame towards the bottom.



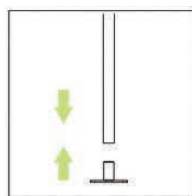
Step 4

Zip the bottom of the graphic.



Step 5

For TS-SPC straight models only: Connect the frame onto the metal base feet.



*Hardware Warranty warrants product against defects in materials and workmanship. Graphic Warranty covers the print vibrancy and media performance. Neither warranty covers damage due to accidents, abuse, mishandling, over-tightening components, or normal wear and tear. Any repair or replacement is at discretion of factory.